

RDP

THE EFFICIENT ALL-ROUNDER



THE EFFICIENT ALL-ROUNDER

THE ALTERNATIVE TO CLASSICAL BELT DRIVES

The high-performance RDP fan is a double-inlet, direct-drive centrifugal fan with backward curved blades. With a combination of the motor, lightweight aluminium impeller and electronics, it is particularly compact and robust. This makes the RDP the ideal partner where you are looking to replace a fan with a more energy-efficient product, for example.



START SAVING WITH THE RDP:

1) LOW COSTS FOR INSTALLATION AND SETUP

- No further assembly work.
- Plug and Play electronics don't need configuring.

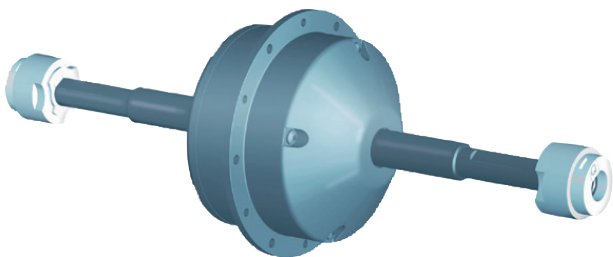
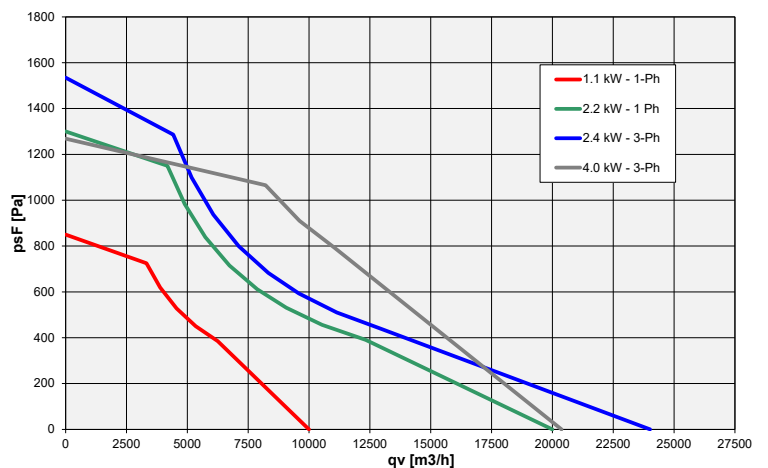
2) LOW OPERATING COSTS

- IE5 EC direct-drive motor.
- No belt losses.
- Streamlined motor installation for optimum aerodynamics.

3) LOW MAINTENANCE COSTS

- The belt does not require maintenance.
- Long-life, maintenance-free bearings.

RDP RANGE - PLANNED EXPANSION OF THE PERFORMANCE ENVELOPE



TECHNICAL FEATURES

- “One-piece” integrated solution.
- Top rating efficiency.
- Plug and play operation.
- No configuration needed.
- Low noise level.
- High reliability.

GENERAL FEATURES

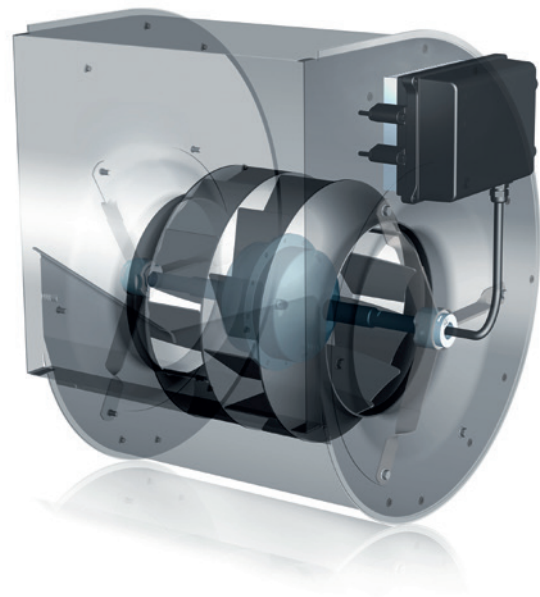
- Sensor-less control.
- Simple installation due to plug and play.
- Complete drive system IP 54.
- Designed for double inlet fans.
- EMC compliant to IEC 61800-3 requirements, class C1 and low harmonics for 1-Ph models, class C2 for 3-Ph models.

INTERFACE

- Analogue interface for speed control.
- Daisy chain connectivity.
- Master-slave function.
- Full MODBUS interface compliancy.

ENERGY SAVING CONCEPT

- New high efficiency permanent magnet motor.
- New compact and streamlined motor design.
- High intensity neodymium magnets.
- No obstruction of intake flow due to the control unit, which is fitted to the side-plate.
- Low aerodynamic losses through intelligent impeller and casing design.



RDP RANGE

Motor \ Size	280	315	355	400	450	500	560	630
1 kW / 1 Ph	In production							
2.2 kW / 1 Ph	In production							
2.4 kW / 3 Ph	In production				Under development			
4 kW / 3 Ph				Under development				

WORLDWIDE LOCATIONS

NICOTRA-GEBHARDT.COM

AUSTRALIA

65 Yale Drive,
Epping, VIC 3076
Phone +61 3 9017 5333
Fax +61 3 8401 3969
E-mail info@nicotra.com.au

BELGIUM

Allée des Artisan,18
4130 Esneux
Phone +32 (0)42288580
Fax +32 (0)42288580
E-mail info@nicotra.be

CHINA

88 Tai'An Road, XinQiao, ShiJi, Panyu
Guangzhou 511450
PR CHINA
Phone +86 (0)20-2293 5700
Fax +86 (0)20-2293 5701
E-mail sales@nicotra-china.com

FRANCE

Leader's Park Bat A1
3 chemin des Cytises
69340 Francheville
Phone +33 (0)4 72 79 01 20
Fax +33 (0)4 72 79 01 21
E-mail ngfrance@nicotra-gebhardt.com

GERMANY

Gebhardtstraße 19-25
74638 Waldenburg
Phone +49 (0)7942 101 0
Fax +49 (0)7942 101 170
E-mail info.ng.de@regalbeloit.com

GREAT BRITAIN

Unit D, Rail Mill Way
Parkgate Business Park
Rotherham
South Yorkshire
S62 6JQ
Phone +044 01709-780760
Fax +044 01709-780762
E-mail sales@nicotra.co.uk

INDIA

Plot no 28F & 29, Sector-31,Kasna,
Greater Noida-201 308 U.P (India)
Phone +91 120 4783400
Phone +91 22 65702056 (Mumbai)
Phone +91 80 25727830 (Bangalore)
E-mail info@nicotraindia.com

ITALY

Via Modena, 18
24040 Zingonia (BG)
Phone +39 035 873 111
Fax +39 035 884 319
E-mail info@nicotra-gebhardt.com

MALAYSIA

Lot 1799, Jalan Balakong
Taman Perindustrian Bukit Belimbing
43300 Seri Kembangan
Selangor
Phone +603 8961-2588
Fax +603 8961-8337
E-mail info_malaysia@nicotra-gebhardt.com

SPAIN

C/ Jamaica, 5
Apdo. Correos 5077
28806 Alcalá de Henares
Phone +34 918-846110
Fax +34 918-859450
E-mail info.es@nicotra-gebhardt.com

SINGAPORE

12 Tuas Loop
Singapore 637346
Tel: +65 6863 3473
Fax: +65 6863 3476
E-mail info_singapore@nicotra-gebhardt.com

SWEDEN

Box 237
Krakatorpsgatan 30
43153 Mölndal
Phone +46 (0)311302610
E-mail info.se@nicotra-gebhardt.com

THAILAND

6/29 Soi Suksawadi 2, Moo 4, Suksawadi Road,
Kwang Jomthong, Khet Jomthong,
Bangkok 10150
Phone +662 476-1823-6
Fax +662 476-1827
E-mail sales@nicotra.co.th

United States (USA)

Regal Beloit America, Inc.
200 State Street
Beloit, WI 53511
Mobile +1 608 224 9967
E-mail drew.donahue@regalbeloit.com

NICOTRA|Gebhardt®

Nicotra Gebhardt Germany

Nicotra Gebhardt GmbH
Gebhardtstraße 19-25
74638 Waldenburg (Germany)
Phone +49 7942 1010
Fax +49 7942 101 170
E-mail info.ng.de@regalbeloit.com
Web: www.nicotra-gebhardt.com

Nicotra Gebhardt Italy

Nicotra Gebhardt S.p.A
Via Modena, 18
24040 Zingonia (BG) (Italy)
Phone +39 035 873 111
Fax +39 035 884 319
E-mail info@nicotra-gebhardt.com
Web: www.nicotra-gebhardt.com

APPLICATION CONSIDERATIONS

The proper selection and application of power transmission products and components, including the related area of product safety, is the responsibility of the customer. Operating and performance requirements and potential associated issues will vary appreciably depending upon the use and application of such products and components. The scope of the technical and application information included in this publication is necessarily limited. Unusual operating environments and conditions, lubrication requirements, loading supports, and other factors can materially affect the application and operating results of the products and components and the customer should carefully review its requirements. Any technical advice or review furnished by Regal Beloit America, Inc. and/or its affiliates ("Regal") with respect to the use of products and components is given in good faith and without charge, and Regal assumes no obligation or liability for the advice given, or results obtained, all such advice and review being given and accepted at customer's risk.

For a copy of our Standard Terms and Conditions of Sale, please visit <http://www.regalbeloit.com> (please see link at bottom of page to "Standard Terms and Conditions of Sale"). These terms and conditions of sale, disclaimers and limitations of liability apply to any person who may buy, acquire or use a Regal product referred to herein, including any person who buys from a licensed distributor of these branded products.

Regal and Nicotra Gebhardt are trademarks of Regal Beloit Corporation or one of its affiliated companies.

© 2018 Regal Beloit Corporation, All Rights Reserved. MCB18074E • Form# 10246E

REGAL®